



Volume 81, Issue 1

Spring 2016

## 2016 President's Message – Leslie Eibl

### Inside This Issue:

President's Message .....	1
March Event Recap .....	2
May Event .....	2
Promising Professional Award .....	3
SLA Annual & Chapter Meet up..	4

Happy spring to all! As I begin a second term as president and reflect on this past year and upcoming year, I'm reminded of the consistency of change. As we're currently seeing change in the seasons, climate, and environment, we see this paralleled in our profession as a whole. As a profession, we are encouraged to embrace and adapt to our ever-changing roles by keeping up with current technologies and trends, sharing and learning from colleagues, and consistently communicating our value to our peers and organizations.

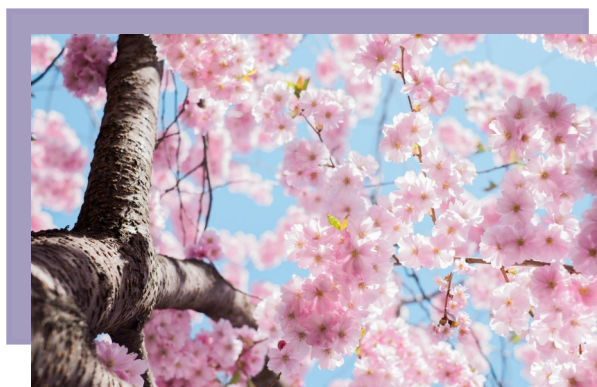


Photo obtained from Stocksnap.io CCO license.

Change has not escaped SLA, either. The most recent changes within SLA that have occurred these past few months involve the transition to an association management company, MCI USA. As part of this change, Erin Fuller, from MCI USA is now serving as SLA's transition executive and a search for a new SLA Executive director has commenced.

(continues on page 5)

Visit the [Member Directory Page](#) to access membership information.

You will need to log in, select [Membership Directory](#), and set [Pittsburgh chapter](#) as the unit.

### Welcome New Chapter Members!

#### February

Tricia Burmeister  
Hilary Lewis Lackner

#### March

Elizabeth Schwartz

#### April

Tanja Bekhuis

## March Event Recap: Pop Craft

Chapter members, student chapter members, and friends of members got crafty on March 23 for an evening of screen printing!

Each attendee cut their own stencil from either a chosen design or one drawn on their own, practiced printing it with their chosen ink color through a screen, then printed it to a tote bag. Some t-shirts were also printed!

The event was hosted by [Pop Craft Pittsburgh](#) at Assemble on Penn Avenue.



From top to bottom:

Members Amy Watson and Denise Callihan get ready to ink and print

A little help drying the tote bags from Pop Craft owner Monica Yope

Screen printing in action!

Photo Credits: Amy Watson & Leslie Eibl



## Upcoming Event!

### Seminar on Competitive Intelligence

Presented by Terri Sawyer, Senior Product Manager at ProQuest Dialog

**Thursday, May 26<sup>th</sup>, 7:00 PM**

Amy Knapp Room,  
Hillman Library

Please RSVP by **May 23rd** at:

<http://tinyurl.com/slacpitmay2016>



## 2016 Pittsburgh Chapter Promising Professional Award

Margarete Bower & Leslie Eibl

Congratulations to Ryan Splenda who is the 2016 recipient of our chapter's Promising Professional Award!

Ryan is currently the Liaison Librarian for Business in Hillman Library at the University of Pittsburgh and has also had experience as a Production Manager and Research Librarian with Behavioral Measurement Database Services (HaPI database) in Pittsburgh. He is currently serving as chapter secretary and will use the award to attend his first SLA conference this June in Philadelphia. A report of his conference experience will appear in a future issue of the Confluence.

The Promising Professional award is one of 7 chapter awards recognizing our outstanding chapter members. Many thanks to the awards committee, Margarete Bower, Eve Wider, Deb Martin, & Brooke Hyatt, for all of their work on this award!



Photo credit: Diana Dill

### SLA Awards

Check the links below for further descriptions.

[SLA Honors Judith Currano, head of the Chemistry Library at the University of Pennsylvania, with the Vormelker Award](#)

[Jim Matarazzo \(a Pitt SIS PhD grad\) and Toby Pearlstein honored with the John Cotton Dana Award](#)

### Explore SLA History

*Information Outlook*, SLA's bimonthly newsletter and formerly published as *Special Libraries* until 1997 now has a new online location. You can view previous issues through San Jose State University's ScholarWorks: [http://scholarworks.sjsu.edu/sla\\_sl/](http://scholarworks.sjsu.edu/sla_sl/)

More current issues, from January 2013– present, are accessible [online](#) with an SLA member login

More information can be found on the [Information Outlook site](#).



# SLA Annual Conference, Philadelphia

## June 12-14, 2016



Photo credit: SLA conference website: <http://www.sla.org/attend/sla-2016-annual-conference/>

You can follow and join the conference conversation topic "Motivation to Lead" as an attendee or non-attendee on:

- Facebook: [www.facebook.com/slahq](http://www.facebook.com/slahq)
- Twitter: @slahq and #SLA2016
- LinkedIn: [https://www.linkedin.com/company/sla?trk=company\\_logo](https://www.linkedin.com/company/sla?trk=company_logo)

♦ Two keynote speakers: Erika Andersen, founding partner of Proteus and Marilyn Johnson, author of *Lives in Ruins*, *This Book Is Overdue!* and *The Dead Beat*

♦ Diverse learning opportunities including Spotlight Sessions and Hot Topics

♦ Visit the INFO & EXPO for up-to-date vendor information

♦ For a preview of the conference, check out the online [Conference Planner](#)

♦ Additional information about to conference location and events, including [Dine-arounds](#), can be found at: <http://philly2016.sla.org/>



## Chapter Meet-Up at SLA 2016!

The SLA Pittsburgh Chapter will host a meet-up during the 2016 Annual Conference in Philadelphia. Please join us on **Monday, June 13th** at **Sto's Bar, 235 Market Street in Philadelphia** starting at **7:00 PM**. Sto's is owned and operated by a Pittsburgh native and Pitt alum.

If you plan to attend, please RSVP to Carrie Wardzniski ([cwardzniski10@gmail.com](mailto:cwardzniski10@gmail.com)) no later than June 12<sup>th</sup>.

Safe travels and see you in Philly!

SLA-CPIT  
Special Libraries  
Association-  
Pittsburgh Chapter

[pittsburgh.sla.org](http://pittsburgh.sla.org)

**The Confluence** is the newsletter of the *Special Libraries Association - Pittsburgh Chapter*. The next issue will be published in **FALL 2016**. Article submission deadline is TBA.



President's Message (continued from page 1)

I'm looking forward to learning from these and any upcoming changes this year with chapter members and our board to continue to support our chapter's mission and strategic priority of member engagement in the best ways possible. As always, please feel free to reach out to me if you have any ideas for the chapter, questions, or if you would like to be more involved with the chapter or serve on a committee.

Have a wonderful spring and summer!



More products of the SLA Pittsburgh's Pop Craft event on March 23.

Photo credit: Leslie Eibl



Photo credit: Brooke Hyatt

Have an article idea? Any news to share? Would you like to contribute to our newsletter? Please let us know!

The *Confluence* is always looking for new contributors. Please contact Brooke Hyatt ([brookehyatt@gmail.com](mailto:brookehyatt@gmail.com)) and Leslie Eibl ([leslieeibl@gmail.com](mailto:leslieeibl@gmail.com)) with any submissions, ideas, concerns or questions about the newsletter.



[facebook.com/slahq](https://facebook.com/slahq)



[twitter.com/slahq](https://twitter.com/slahq)

Special Libraries Association - Pittsburgh Chapter assumes no responsibility for the statements and opinions advanced by contributors to the Association's publications. Editorial views do not necessarily represent the official position of Special Libraries Association - Pittsburgh Chapter.

© 2016 by Special Libraries Association - Pittsburgh Chapter. Material protected by this copyright may be photocopied for the non-commercial purpose of scholarship or research.